

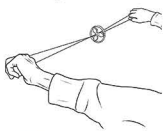
GLOFX ION ORBIT

USER GUIDE

GET!
SPINNING!

1 POWER ON

Press all three of the Pro-Click Buttons on the top of your Ion Orbit to turn each light on. Refer to the Lux 2.0 Display Modes insert for customizing each light. Hold the button to power off.



2 GRAB THE HANDLES

Grab one handle in each hand, and suspend the orbit in the air. Pull the Orbit fairly tight, with just a little bit of slack.



3 START SPINNING

Begin spinning your Ion Orbit in big circles in front of you.



4 TENSION AND RELEASE



A. After you have made a few big circles, pull the Orbit tight. This will cause the Orbit to spin fast in a small "orbit". The basic "orbit" motion may take a few tries, but it is simply a matter of tension and release.
B. As the Orbit slows down, release tension. As it comes to a stop, pull the handles tight again to spin the Orbit in the opposite direction.
C. Repeat this process to continue the "orbit."

5 FLOWERS AND SHAPES

To begin making more intricate shapes with your Orbit, simply combine steps 3 and 4. This will create a shape called a "flower." While the Orbit is spinning in it's "orbit", simultaneously spin the Orbit in big circles. This will create beautiful light patterns in front of your eyes.



SWAP YOUR BATTERIES

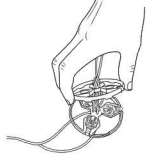
1 UNSCREW THE HOUSING

Set your Orbit on a flat surface and use a Phillips-head screwdriver to loosen the screw located in the middle of the Ion Orbit housing.



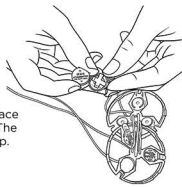
2 OPEN HOUSING & REMOVE CHIPS

Lift one side of the casing. Remove all three Lux 2.0 chips from the Orbit housing.



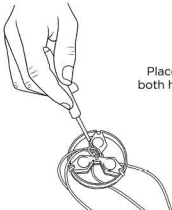
3 FRESH BATTERIES

Slide the batteries out of each microchip. Replace the batteries with two fresh CR1616 batteries. The "+" side should face up toward the gold "X" clip.

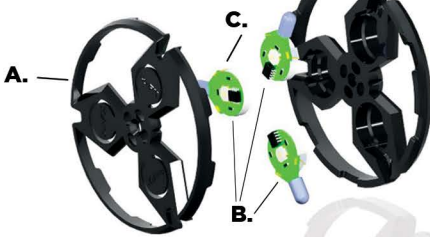


4 CLOSE THE HOUSING

Place all 3 Lux 2.0 chips back in the housing. Put both halves of the housing back together. Tighten the screw, then keep spinning!



FEATURES



A ION HOUSING

- Made of lightweight polycarbonate
- Virtually indestructible
- Perfectly balanced

B LUX 2.0 MICROCHIPS

- High Intensity LEDs with Brightness Control
- Virtually infinite color combinations
- Easy operation
- 34 vibrant colors, 12 display modes
- Super bright
- Lock feature to preserve battery life

(6) CR1616 BATTERIES C

- Provides over 10 hours of battery life on any mode
- Up to 20 hours of battery life on practice modes
- Swap batteries hassle-free with the "X" clip

2mm SATIN LEASHES

- Perfect for all styles of orbiting
- High-quality woven satin
- 2mm diameter

T2 HANDLES

- Designed for unlimited tricks and superior control
- Create maximum tension
- No more blisters!

SUPPORT

SUPPORT@GLOFX.COM
844-GO-GLOFX
(1-844-464-5639)